

**BUILDING
SPECIFICATIONS:**

ZONING: O2

BLDG SIZE: 56,414 S.F+/-

SUITES: 1250-3000 S.F

YEAR BUILT: 1998

ROOF: TILE

PARKING: AMPLE

**PARK
DEVELOPMENT
CORPORATION**

1768 PARK CENTER DR
SUITE 380
ORLANDO, FL 32835

Phone: 407-294-6400

Fax: 407-294-9007

parkdev2@aol.com

www.parkdevelopment.net

PARK PLACE PHASE IV & V

METROWEST

**1768 PARK CENTER DRIVE
ORLANDO, FLORIDA 32835**

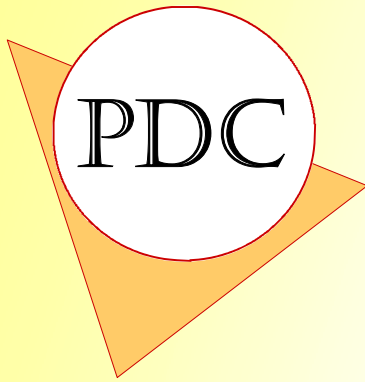
- ◆ BEAUTIFUL LANDMARK BUILDING
- ◆ METROWEST COUNTRY CLUB COMMUNITY
- ◆ IMMEDIATE OCCUPANCY—NO WAITING



VIEW NORTH FROM HIAWASSEE ROAD



VIEW SOUTH FROM PARK CENTER DRIVE



BUILDING AMENITIES:

**CLASS A OFFICE SPACE
& FINISHES**

**CLASSIC TILE ROOF
COVERED PARKING**

**GRANITE & MARBLE
RESTROOMS**

**AIRY LIGHT SPACES
WITH MANY WINDOWS**

VOLUME CEILINGS

**TENANT CONTROLLED
ELECTIC, NO CHARGES
FOR AFTER HOURS**

**ACCESS TO COMMON
AREAS 7 DAYS, 24 HRS**

**PARK
DEVELOPMENT
CORPORATION**

**1768 PARK CENTER DR
SUITE 380
ORLANDO, FL 32835**

Phone: 407-294-6400

Fax: 407-294-9007

parkdev2@aol.com

www.parkdevelopment.net

PARK PLACE PHASE IV & V

METROWEST

1768 PARK CENTER DRIVE ORLANDO, FLORIDA 32835

- ◆ CLASS A TENANTS
- ◆ TREMENDOUS LOCATION TO 408, I-4, TURNPIKE, BEELINE
- ◆ WITHIN MINUTES OF UNIVERSAL STUDIOS, DISNEY, SEA WORLD & ORANGE COUNTY CONVENTION CENTER

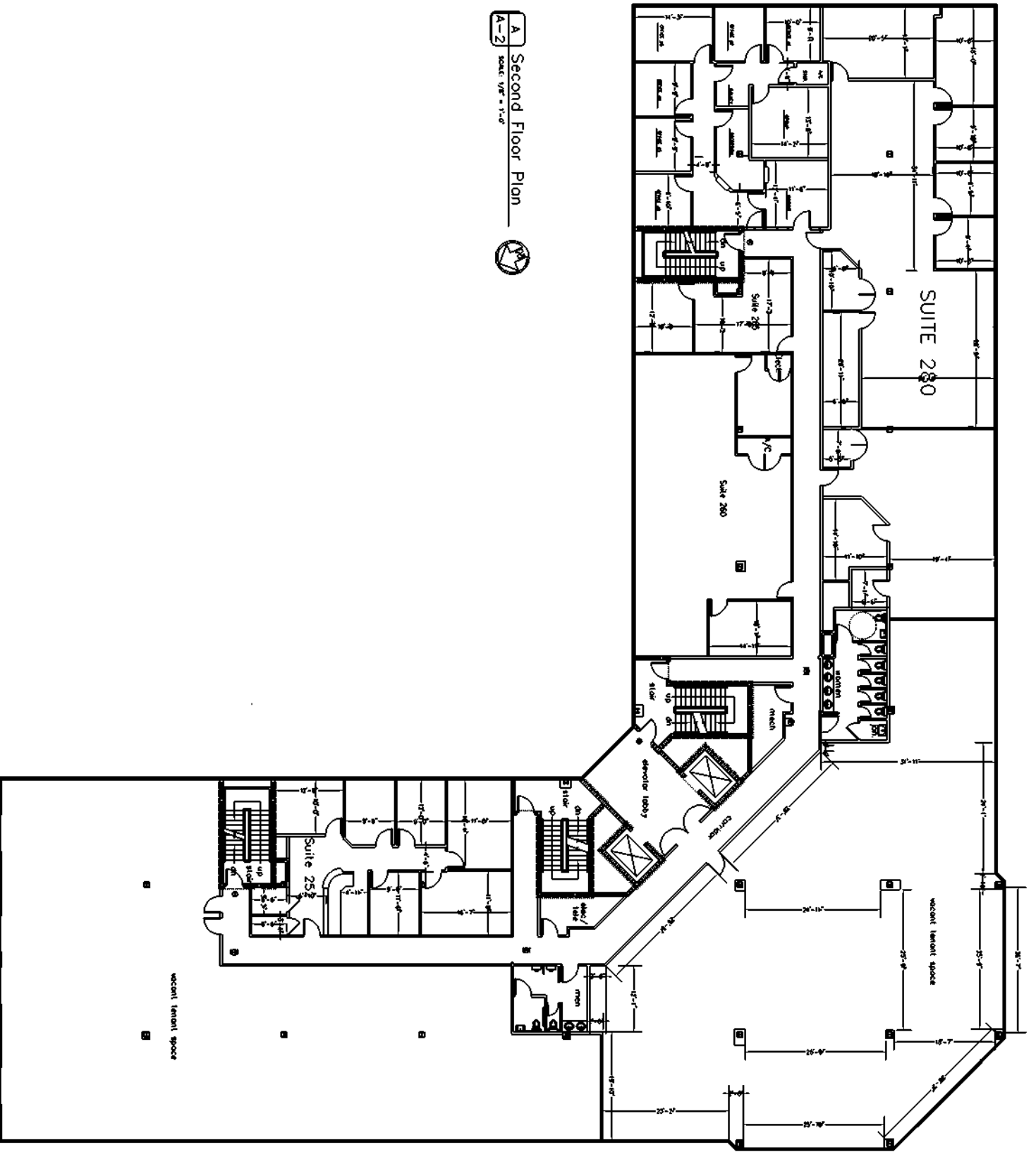


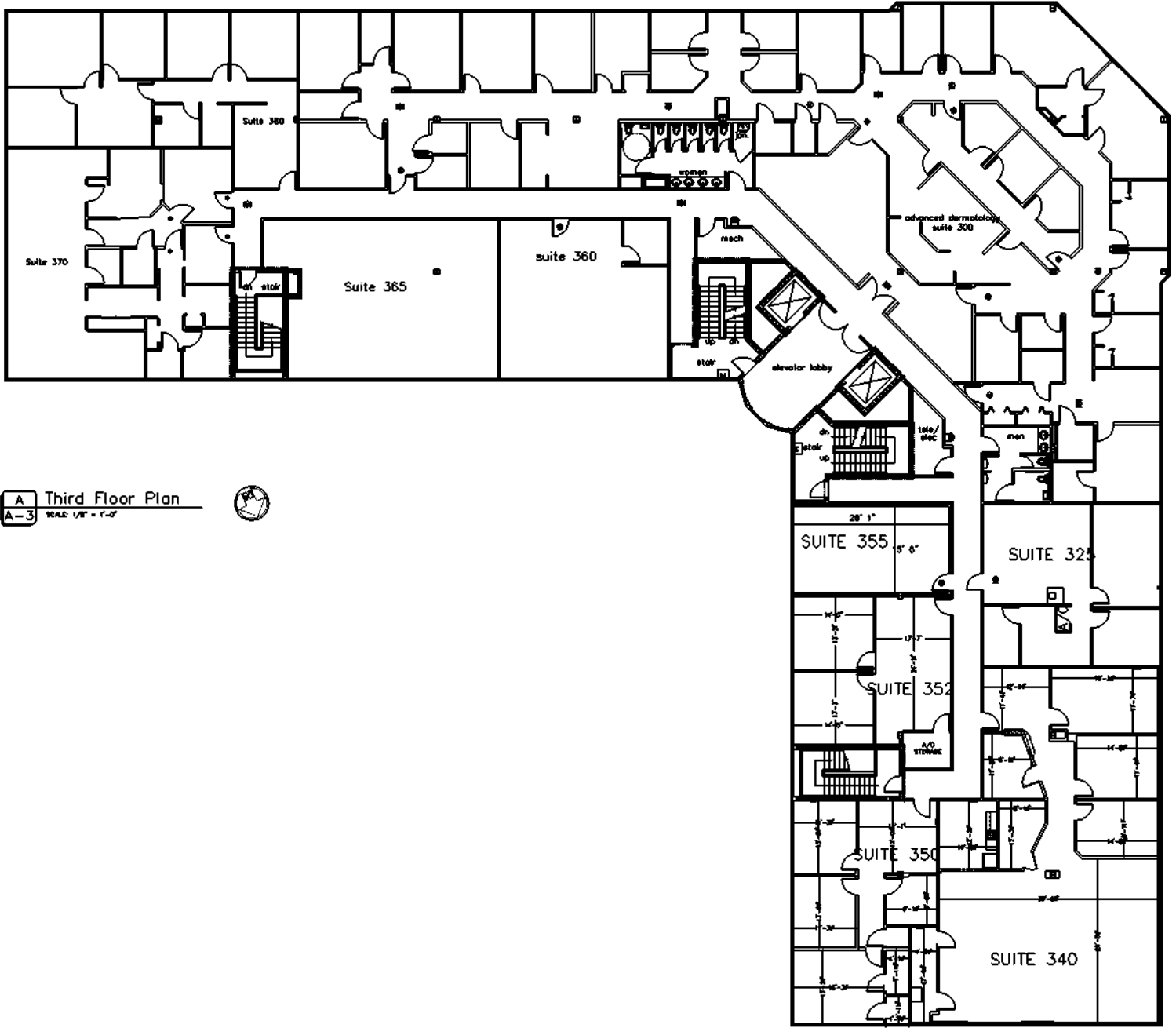
VIEW WEST FROM PARK CENTER DRIVE



VIEW NORTH FROM PARK CENTER DRIVE

A Second Floor Plan
 SCALE: 1/8" = 1'-0"





A Third Floor Plan
 A-3 SCALE: 1/8" = 1'-0"

