



PDC

**BUILDING
SPECIFICATIONS:**

ZONING: O2

BLDG SIZE: 60,472 S.F+/-

SUITES: 1250-3000 S.F

YEAR BUILT: 2008

ROOF: FLAT/ TILE

PARKING: AMPLE

**PARK
DEVELOPMENT
CORPORATION**

1768 PARK CENTER DR
SUITE 400
ORLANDO, FL 32835

Phone:407-294-6400 X 207
Fax: 407-294-9007
tiffany@parkdevelopment.net

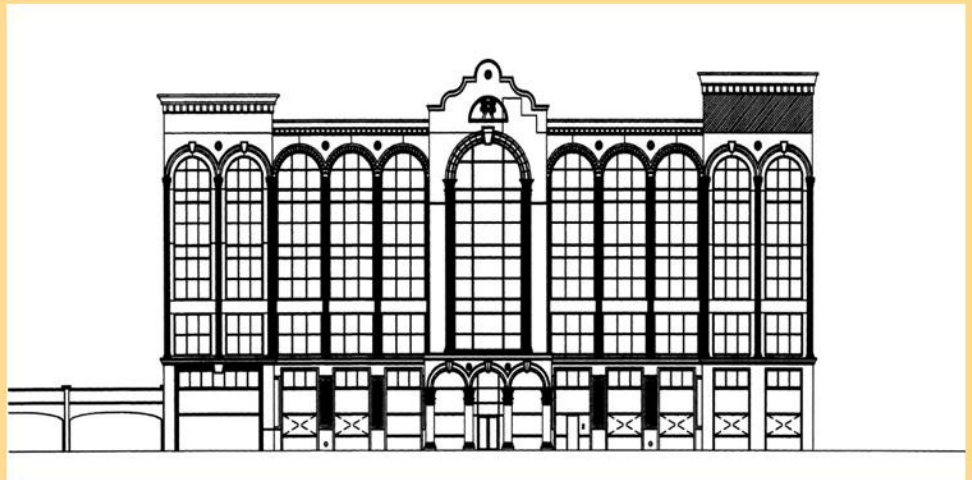
www.parkdevelopment.net

PARK PLACE PHASE III

METROWEST

**1785 PARK CENTER DRIVE
ORLANDO, FLORIDA 32835**

- ◆ BEAUTIFUL LANDMARK BUILDING
- ◆ METROWEST COUNTRY CLUB COMMUNITY
- ◆ PRE-CONSTRUCTION LEASING NOW



VIEW NORTH FROM PARK CENTER DRIVE